



Mutual
Funds

SMALL CAP VALUE FUND

Fourth Quarter 2011

Investment Objective

The Dean Small Cap Value Fund seeks long-term capital appreciation and secondarily, dividend income.

Investment Philosophy

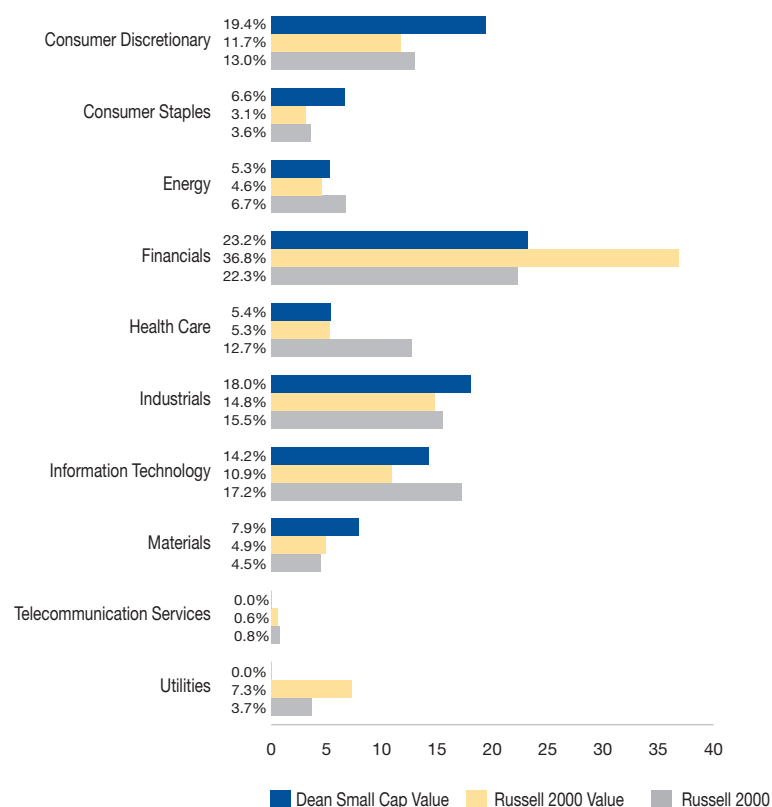
As traditional value investors, we believe that focusing on high quality companies that are undervalued for transitory reasons can lead to above average returns.

We believe that risk-adjusted performance can be enhanced by emphasizing stocks which exhibit the best risk/reward relationship (limited downside risk with meaningful upside potential).

Fund Information

Ticker Symbol	DASCX
Benchmark	Russell 2000 Value
Morningstar Category	Small Cap Value
Fund Inception	5/28/1997
Sub-Advisor Inception	6/30/2008
Net Assets	\$47.4 million
Minimum initial purchase	\$1,000
Minimum IRA Purchase	\$250

Sector Weights³



Portfolio Characteristics³

	DASCX	R2000V	R2000
Wtd. Avg. Mkt Cap	\$1.4B	\$1.1B	\$1.2B
Median Mkt. Cap	\$1.4B	\$0.4B	\$0.5B
P/E (excl. negative earnings)	12.9x	15.0x	16.9x
P/E (projected next 12 months)	10.3x	13.1x	14.6x
Price/Book	2.1x	1.2x	1.8x
Price/Cash Flow	8.6x	10.9x	12.6x
Dividend Yield	1.5%	2.2%	1.5%
Number of Holdings	77	1,354	1,966
Cash & Equivalents	1.9%	0.0%	0.0%
Non-U.S.	4.4%	0.0%	0.0%

Top Ten Holdings³

Ticker	Name	Sector	% Total
AM	American Greeting Corp	Cons Discr	2.1%
TCB	TCF Financial Corp	Financials	2.1%
HLS	HealthSouth Corp	Health Care	2.1%
GEOY	GeoEye Inc	Industrials	2.0%
IM	Ingram Micro Inc	Info Tech	2.0%
GEF	Greif Inc	Materials	2.0%
DOLE	Dole Food Co Inc	Cons Staples	2.0%
AEL	American Equity Invest. Life	Financials	2.0%
HBI	Hanesbrand Inc	Cons Discr	2.0%
CLD	Could Peak Energy	Energy	2.0%
% in Top 10			20.3%

Performance Comparison

Periods Ended 12/31/11 (%) ³	QTR	YTD	1 Yr	3 Yr	5 Yr	10 Yr
Dean Small Cap Value Fund	19.36	-3.84	-3.84	19.30	-0.51	4.81
Russell 2000 Value ¹	15.97	-5.50	-5.50	12.36	-1.87	6.40
Russell 2000 ²	15.47	-4.18	-4.18	15.63	0.15	5.62

Gross Expense Ratio: 1.94% / Net Expense Ratio: 1.26% . Expense ratios per the 7/29/11 prospectus. Gross expenses reflect actual expenses incurred during the fiscal year ended March 31, 2011 and includes acquired fund fees and expenses of 0.01%. The Fund's adviser, Dean Investment Associates, has contractually agreed to waive its management fee and/or to reimburse certain Fund operating expenses so that annual operating expenses do not exceed 1.25% of the Fund's average daily assets. This contractual agreement is in place through July 31, 2012.

Performance figures shown are past performance and are not a guarantee of future results. Due to market volatility, fund performance may fluctuate substantially over the short-term and current performance may differ from that shown. The value of the Fund's shares and their return will fluctuate so that an investor's shares, when redeemed, may be worth more or less than their original cost. Performance data current to the most recent month end may be obtained by calling 888.899.8343. Periods over one year are annualized.



Mutual Funds

SMALL CAP VALUE FUND

Fourth Quarter 2011

Lead Manager Biography

Steven D. Roth, CFA *Lead Portfolio Manager*

Steve Roth is a founding member of Dean Capital Management, LLC and serves as the lead Portfolio Manager on the Dean Small Cap Value strategy. He also provides research support to the other DCM investment strategies. Prior to forming DCM in 2008, Steve worked for American Century as a co-Portfolio Manager on the Small Cap Value team, which he joined in 2002. Prior to American Century, Steve began his investment career in 2000 as an equity analyst at Strong Capital Management.

Steve received his BA from the University of Nebraska where he graduated summa cum laude. He is a CFA charter holder and a member of the CFA Institute.

Additional Managers' Biographies

Kevin E. Laub, CFA *Portfolio Manager*

Kevin Laub is a founding member of Dean Capital Management, LLC and lead Portfolio Manager on the Dean Large Cap Value and Multi Cap Value strategies. He also provides research support and oversight to the firm's other investment strategies. Prior to forming DCM, Kevin was the Chief Investment Officer for C.H. Dean. Before joining Dean in 2006, Kevin worked for American Century Investments where he was an original member of the team that launched the Small Cap Value strategy in 1998, serving as a co-Portfolio Manager from 2002 through 2006. He started his professional career as a senior auditor for Deloitte & Touche, LLP, and has worked in the financial industry since 1993.

Kevin received his BA and MBA from the University of Iowa. He is a CFA charter holder and a member of the CFA Institute.

Douglas A. Leach, CFA *Portfolio Manager*

Doug Leach is a founding member of Dean Capital Management, LLC and serves as the Chief Compliance Officer and lead Portfolio Manager on the Dean Mid Cap Value strategy. Doug became the Lead Portfolio Manager to the Mid Cap Value Fund when the investment strategy changed from Large Cap Value to Mid Cap Value on March 31, 2011. He also provides research support to the other DCM investment strategies. Prior to forming DCM in 2008, Doug served as senior equity analyst for C.H. Dean beginning in 2006. Prior to joining Dean, Doug worked for American Century Investments where he was a member of the value investment team that manages the American Century Equity Income, Value and Mid Cap Value strategies from 1997 through 2006. Doug has worked in the financial industry since 1991.

Doug received his BA from Central Missouri State and his MBA from the University of Missouri – Kansas City. He is a CFA charter holder and member of the CFA Institute.

About the Sub-Advisor

Dean Capital Management, LLC ("DCM"), an investment advisor registered with the Securities and Exchange Commission, serves as the sub-advisor for the Dean Mid Cap Value fund. DCM was formed in 2008 and is an affiliate of C.H. Dean, Inc. DCM adheres to a disciplined, time-tested value approach which seeks to produce above average returns by emphasizing leading companies that are trading below fair value for transitory reasons. From its Kansas City-area headquarters, DCM manages the Dean Mid Cap Value and Small Cap Value funds, as well as separately managed accounts on behalf of Dean Investment Associates, and C.H. Dean, Inc.

Disclosures

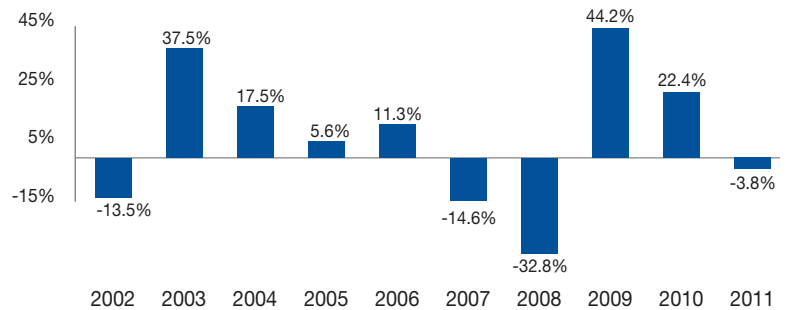
¹Russell 2000 Value measures the performance of those Russell 2000 companies with lower price-to-book ratios and lower forecasted growth values. The performance of the index does not reflect deductions for fees, expenses or taxes. Index is not available for purchase.

²The Russell 2000 is an unmanaged, capitalization-weighted index of domestic small-cap stocks. It measures the performance of the 2,000 smallest publicly traded U.S. companies in the Russell 3000 Index.

³Information provided with respect to the Fund's Portfolio Holdings and Company information are as of 12/31/11 and are subject to change at any time. Investors should consider the investment objectives, risks, charges and expenses of the fund carefully before investing. The prospectus contains this and other important information about the Fund and may be obtained by calling 888.899.8343. Read it carefully before you invest.

The Dean Small Cap Value Fund is distributed by Unified Financial Securities, Inc., 2960 N. Meridian Street, Indianapolis, IN 46208. Member FINRA. Copyright 2012, C.H. Dean Inc. All Rights Reserved.

Calendar Year Total Returns³



Small Cap investing involves greater risk not associated with investing in more established companies, such as greater price volatility, business risk, less liquidity and increased competitive threat.



Mutual Funds

SMALL CAP VALUE FUND

www.deanmutualfunds.com

888.899.8343